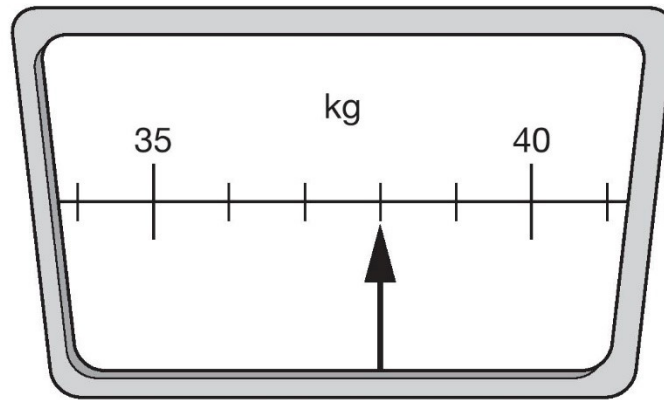


1

This scale shows how much Chen weighs.



How much does Chen weigh?



1

1 mark

2

Alfie collected information about the pets owned by children in his class.

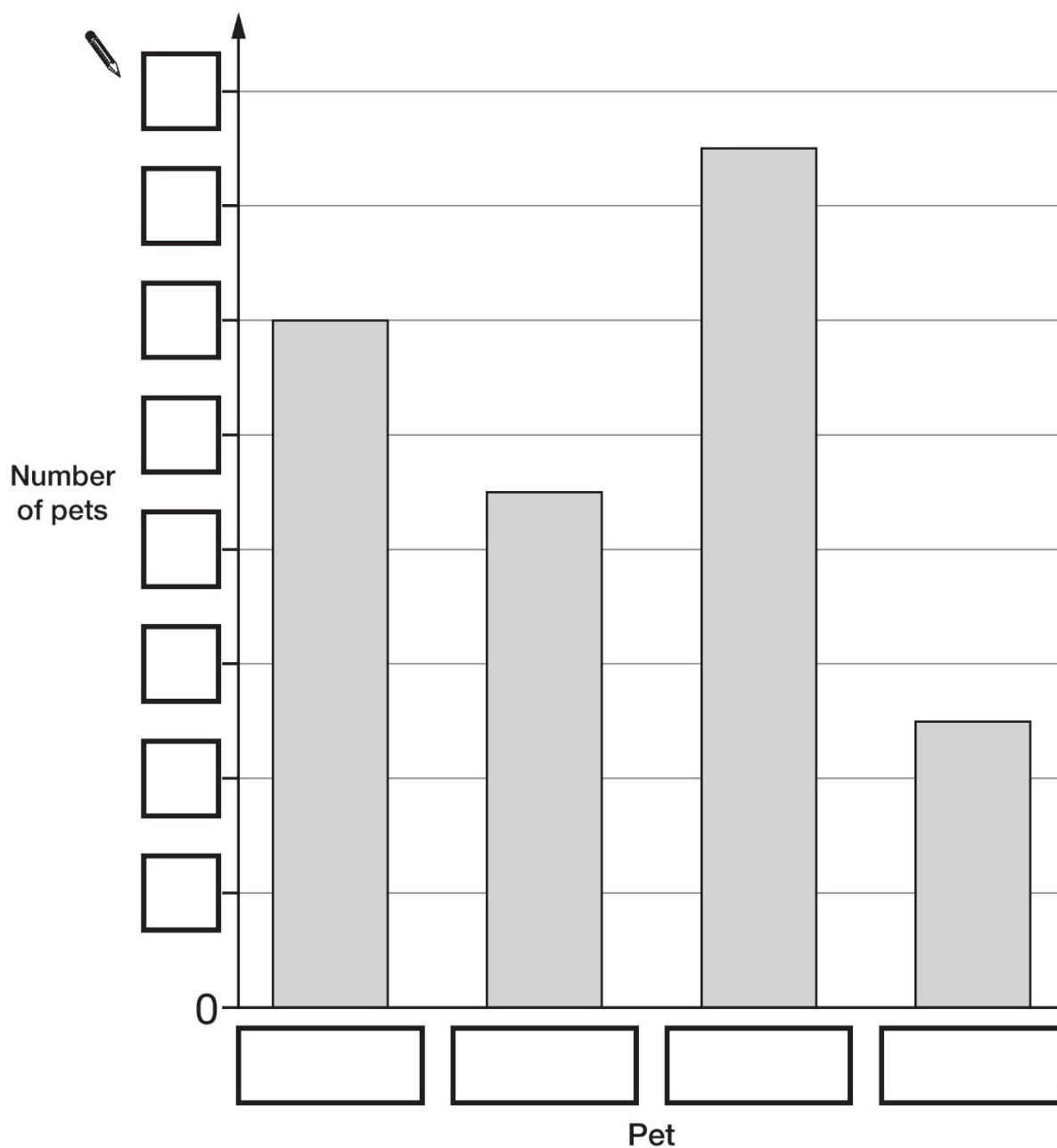


Here are his results.

Pet	Number of pets
dog	9
cat	12
rabbit	5
fish	15

This bar chart shows the information from the table.

Fill in **all** the missing labels.



2a

1 mark

2b

1 mark

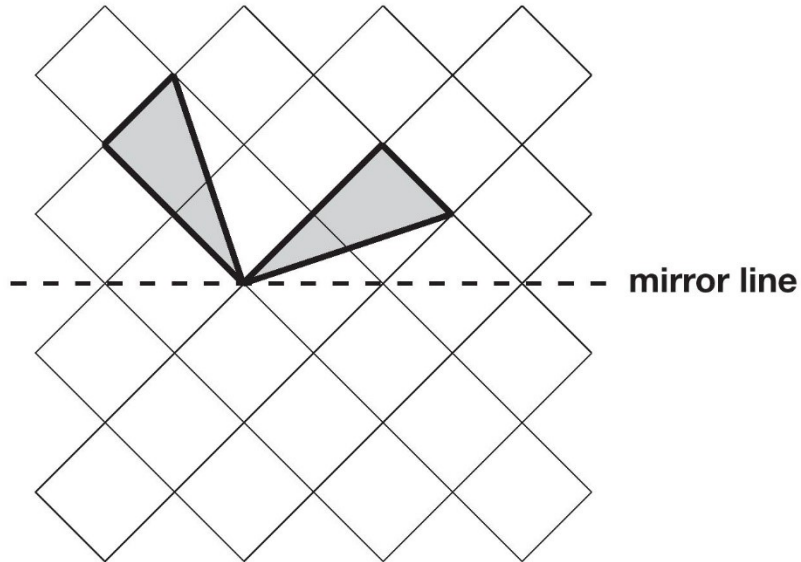
Total out of 3 _____

3

Complete this shape so that it is symmetrical about the mirror line.



Use a ruler.



3

1 mark

4

Circle **three** numbers that add to make 750

450

350

250

150

50

4

1 mark

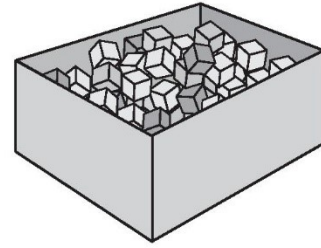
5

Seb has a box of **120** cubes.



He uses some of the cubes to build a tower.

77 cubes are left over.



How many cubes has he used?



Box 1

5a

1 mark

Seb has 77 cubes left over.

He builds two more towers.

One tower uses 18 cubes and the other uses 35 cubes.

How many of his **77** cubes has he got left now?



Show your working

5bi

5bii

2 marks

Total out of 5 _____

6

In these calculations, each missing sign is a **+** or a **-**



Write the missing signs in the circles.



$$8 \bigcirc 7 \bigcirc 6 \bigcirc 5 = 2$$

6a

1 mark

$$8 \bigcirc 7 \bigcirc 6 \bigcirc 5 = 4$$

6b

1 mark

7

Megan has 7 coins that make one pound.



The coins are of **only two** different kinds.

What are the 7 coins?



--	--	--	--	--	--	--

7

1 mark

8

The numbers in this sequence increase by 10 each time.



3 13 23 ...

The sequence continues in the same way.

Write **two** numbers from the sequence that add to make a total of **96**



and

8a

1 mark

Explain why it is **not** possible to find **three** numbers from the sequence that add to make a total of **96**



8b

1 mark

Total out of 5 _____

9

Join each fraction to the correct decimal card.



The first one has been done for you.



$$\frac{3}{10}$$

0.03

$$\frac{3}{5}$$

0.06

$$\frac{3}{100}$$

0.3

$$\frac{3}{50}$$

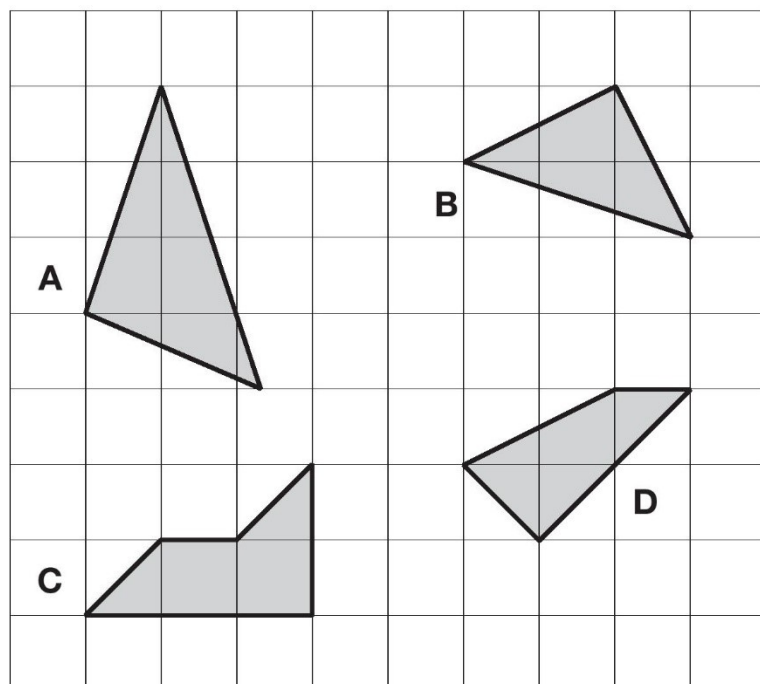
0.6

9

1 mark

10

Here are four shapes on a square grid.



Write the letters of **all** the shapes that have **exactly two** sides which are equal in length.



10i

10ii

2 marks

Total out of 3 _____

11

Calculate $32.18 - 7.62$ 

11

1 mark

12

Circle the approximate measurement.



The length of a banana is about...

 2 cm 20 cm 2 mm 2 m 20 m

The mass of an apple is about...

 2 g 20 kg 200 kg 200 g 2 kg

A glass of fruit juice is about...

 2 ml 2 l 20 ml 200 ml 20 l

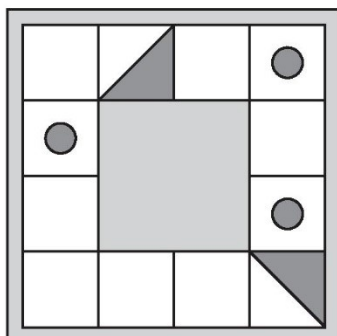
12i

12ii

2 marks

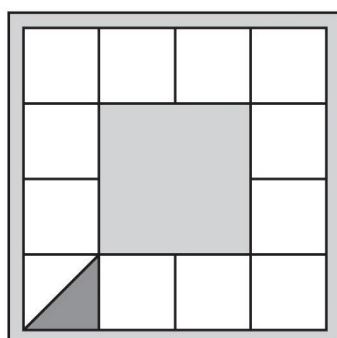
13

Here is a design of dots and triangles on a square tile.



The tile is turned clockwise to the position below.

Shade the missing shapes in their new positions.



13i

13ii

2 marks

Total out of 5 _____

14

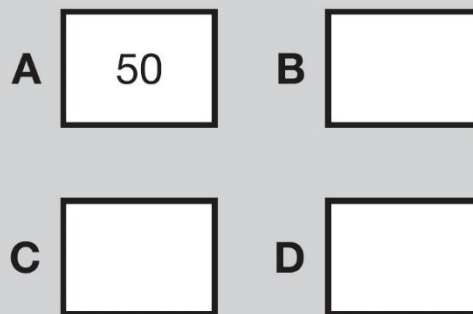
The number in **A** is **twice** the number in **D**.



The number in **B** is **5 less** than the number in **C**.

The number in **D** is **10 more** than the number in **B**.

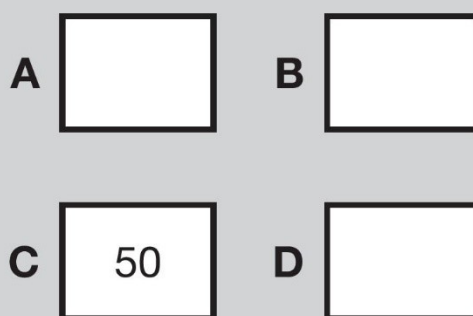
Write the missing numbers in this diagram.



14a

1 mark

Now use the same rule for this diagram.



14b

1 mark

15

200 children went on holiday.



10% of the children went to Wales.

25% of the children went to Scotland.

How many **more** children went to Scotland than went to Wales?



Show
your
working

children

15i

15ii

2 marks

Total out of 4 _____

16



Amy did a survey of what time people get up on a Sunday morning. This table shows her results for 150 people.

Time	number of people
before 7:00am	13
7:00am to 7:59am	28
8:00am to 8:59am	59
9:00am to 9:59am	36
10am and after	14

Look at the table.

How many people get up at **8am or later**?



16a

1 mark

Amy says,

'Two-thirds of the 150 people in the survey get up before 9am.'

Amy is correct.

Explain how you know.



16b

1 mark

17

Write numbers in the boxes to make this calculation correct.



50

-

=

+

10

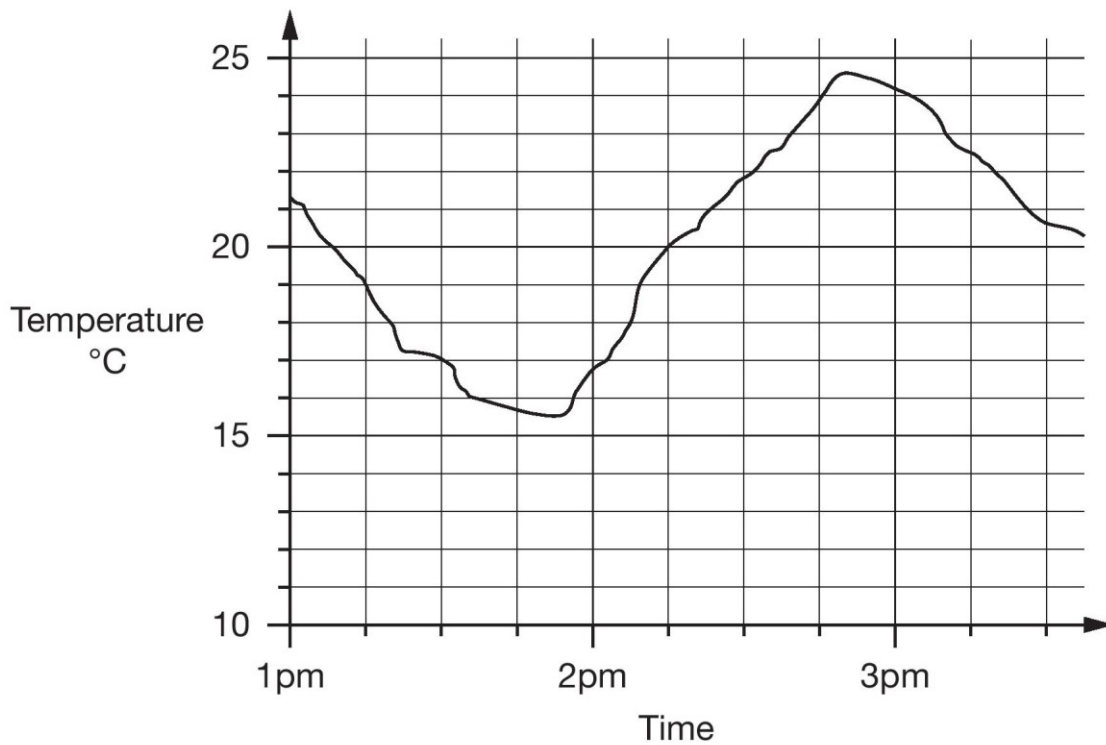
17

1 mark

Total out of 3 _____

18

This graph shows how the temperature changed in Liam's room one afternoon.



Estimate the temperature at 3:15pm.


 °C

18a

1 mark

Estimate the time when the temperature was highest.


 pm

18b

1 mark

How much did the temperature change from 2pm to 2:30pm?
Give your answer to the **nearest degree**.


 degrees

18c

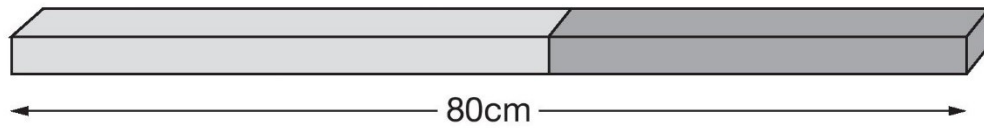
1 mark

19

Alfie has two sticks.



He puts them end to end.

**Not
actual
size**One stick is **10cm longer** than the other stick.

How long are the two sticks?

Show
your
working cm

and

 cm

19i

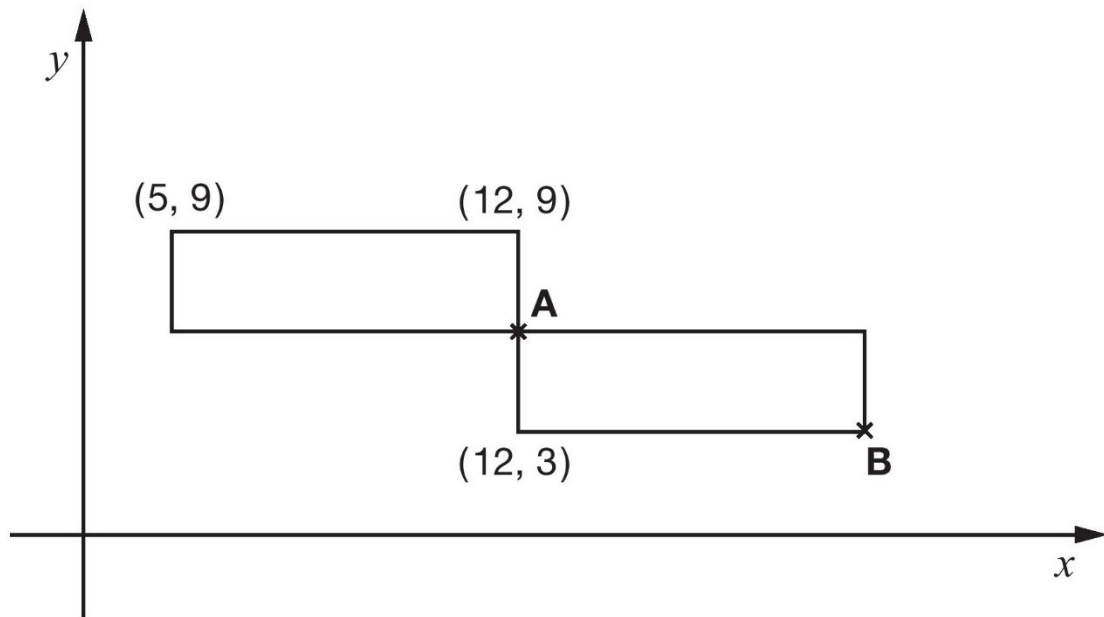
19ii

2 marks

Total out of 5 _____

20

This diagram shows two **identical** rectangles on coordinate axes.



Write the **coordinates** of point **A** and point **B**.



A is (_____ , _____)

20a

1 mark

B is (_____ , _____)

20b

1 mark

21

Amy thought of a number.



She added 0.5 to her number and then doubled the result.

Then she subtracted 0.5 and doubled the new result.

Her final answer was 61

What number did Amy start with?



Show
your
working

21i

21ii

2 marks

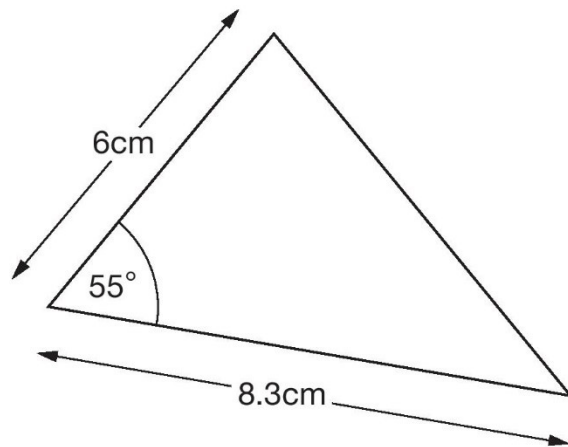
Total out of 4 _____

22

Here is a sketch of a triangle.



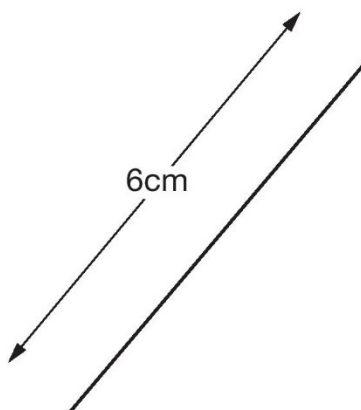
It is not drawn to scale.



Draw the full-size triangle accurately below.

Use a protractor (angle measurer) and a ruler.

One line has been drawn for you.



22i

22ii

2 marks

23

Fill in the three missing whole numbers in this calculation.



Each number is less than 10


$$\square \times \square \times \square = 105$$

23

1 mark

Total out of 3 _____